

TMPTE.VCEplus.premium.exam.60q

Number: TMPTE  
Passing Score: 800  
Time Limit: 120 min  
File Version: 4.0



Website: <https://vceplus.com>

VCE to PDF Converter: <https://vceplus.com/vce-to-pdf/>

Facebook: <https://www.facebook.com/VCE.For.All.VN/>

Twitter : [https://twitter.com/VCE\\_Plus](https://twitter.com/VCE_Plus)

TMPTE

TMap NEXT Test Engineer



**Exam A**

**QUESTION 1**

See the definition below:

Tests in which the supplying party demonstrates that the product particularly meets the functional and non-functional specifications and the technical design, among other things.

Of which test level is this the definition?

- A. acceptance test
- B. development test
- C. system test

**Correct Answer: C**

**Section: (none)**

**Explanation**

**Explanation/Reference:**

**QUESTION 2** In which Map phase activity does the pre-test take place?

- A. Defining central starting points
- B. Intake of the test object
- C. Specifying the test object intake
- D. Executing (re)tests

**Correct Answer: B**

**Section: (none)**

**Explanation**

**Explanation/Reference:**

**QUESTION 3** Which defect has an internal cause that can be solved within the test team?

- A. a defect in the test basis
- B. a defect in the test specification
- C. a defect in the test object

**Correct Answer: B**

**Section: (none)**

**Explanation**

**Explanation/Reference:**

**QUESTION 4** Under which circumstance can Exploratory Testing be used effectively?

- A. when experienced testers with domain knowledge are available
- B. when testing must be as brief as possible on the critical path of the project
- C. when critical functionality, failure of which can cause severe damage, must be tested

**Correct Answer: A**

**Section: (none)**



**Explanation**  
**Explanation/Reference:**

**QUESTION 5**

What is not an advantage of applying a test design technique and recording it in the test specifications?

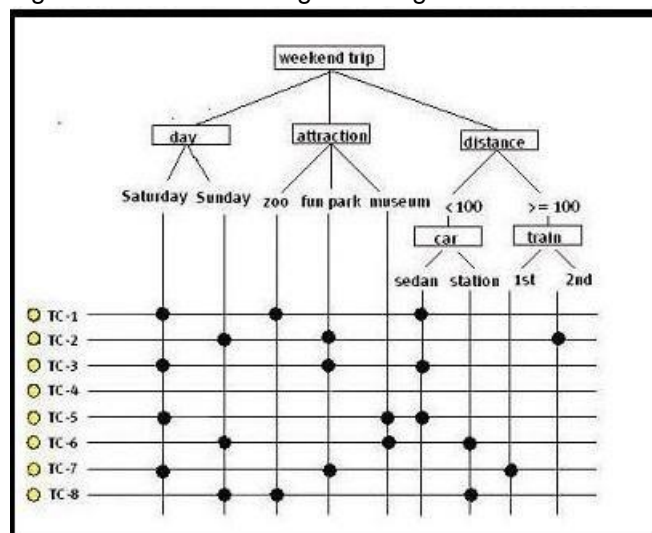
- A. that the tests are reproducible
- B. that the test specifications are transferable
- C. that coverage of 100% is achieved
- D. that it provides a justified elaboration of the test strategy

**Correct Answer: C**  
**Section: (none)**  
**Explanation**

**Explanation/Reference:**

**QUESTION 6** See the illustration below:

To test a registration application for a weekend trip, logical test cases must be created in accordance with the Data Combination Test. In addition, it has been agreed that less depth testing must be performed. One data pair has been defined that must be fully tested in combination: • car - attraction  
 Eight test cases are designed using a classification tree.



Where must the 'bullets' for test case 4 be placed?

- A. Saturday, fun park, 2nd
- B. Sunday, museum, station
- C. Sunday, fun park, station

**Correct Answer: C**  
**Section: (none)**  
**Explanation**

**Explanation/Reference:**

**QUESTION 7**

A structured testing approach is characterized by:

- providing concrete footholds

- covering the full scope and describing the complete range of relevant aspects
- providing a structure, so that it is clear what exactly by whom, when and in what sequence has to be done

What is the fourth characteristic?

- A. it delivers insight into and advice on any risks in respect of the quality of the tested system
- B. managing test activities in the context of time, money and quality
- C. the testing is on the critical path of the total development, as briefly as possible, so that the total lead time of development is shortened
- D. to find defects at an early stage

**Correct Answer:** B

**Section:** (none)

**Explanation**

**Explanation/Reference:**

**QUESTION 8** During the Process Cycle Test, the coverage type paths is used. In which way can coverage be varied here?

- A. by using boundary values
- B. by using a higher or lower test depth level
- C. by taking equivalence classes into consideration

**Correct Answer:** B

**Section:** (none)

**Explanation**

**Explanation/Reference:**

**QUESTION 9** Which activity is not part of the Completion phase?

- A. updating the testware to be preserved
- B. assessing test results
- C. evaluating the test process
- D. selecting the testware to be preserved

**Correct Answer:** B

**Section:** (none)

**Explanation**

**Explanation/Reference:**

**QUESTION 10**

Which type of tool is used in the Execution phase to test a module or component that has a relationship with programs that have not yet been realized?

- A. code coverage tool
- B. comparator
- C. 'model-based testing' tool
- D. stubs and drivers

**Correct Answer:** D

**Section:** (none)

**Explanation**

**Explanation/Reference:**



**QUESTION 11**

For the creation of the central starting point there are several techniques. In the given situation it is necessary that consistency between the data entered is guaranteed. Which of the techniques below is preferable if only one technique may be used?

- A. use of production data
- B. entering through separate front-end software
- C. entering through regular system functions

**Correct Answer: C**  
**Section: (none)**  
**Explanation**

**Explanation/Reference:**

**QUESTION 12** See the definition below: The ease with which the information system can be adapted to new requirements of the user and the changing external environment, or to correct errors. Of which quality characteristic is this the definition?

- A. manageability
- B. flexibility
- C. maintainability

**Correct Answer: C**  
**Section: (none)**  
**Explanation**

**Explanation/Reference:**



**QUESTION 13**

See the decision and test situations below:  
 $R = (A \text{ AND } B) \text{ OR } C$

A = false	B = true	C = false
A = false	B = false	C = true
A = true	B = true	C = false

Which test situation is missing if the coverage type decision points modified condition/decision coverage is used? A.

A = true	B = true	C = true
----------	----------	----------

A = true	B = false	C = false
----------	-----------	-----------

B.

**Correct Answer: B**  
**Section: (none)**  
**Explanation**

**Explanation/Reference:**

**QUESTION 14**

See the specification below in which a decision point is described:  
 $R = (D \text{ OR } E) \text{ AND } F$

Use of the coverage type decision points modified condition/decision coverage produces the following table with test situations:

R = (D OR E) AND F	1	0
D	101	001
E	...	001
F	101	100

Which values are missing where the dots are stated to make the table complete?

- A. 010
- B. 011
- C. 110
- D. 111

**Correct Answer:** B

**Section:** (none)

**Explanation**

**Explanation/Reference:**

**QUESTION 15**

See the specification of a discount campaign below:

Children younger than 4 years of age (<4)	: free
Children of 4 years or older, but younger than 13 years (>4 and <13)	: 50 % discount
Adults older than 64 years (>64)	: 50 % discount

How many equivalence classes can be distinguished from the above specification?

- A. 3
- B. 4
- C. 5



**Correct Answer:** B

**Section:** (none)

**Explanation**

**Explanation/Reference:**

**QUESTION 16** The specification of test cases according to a test design technique follows five general steps. Which step is establishing the starting point? Which step is establishing the starting point?

- A. step 2
- B. step 3
- C. step 4
- D. step 5

**Correct Answer:** C

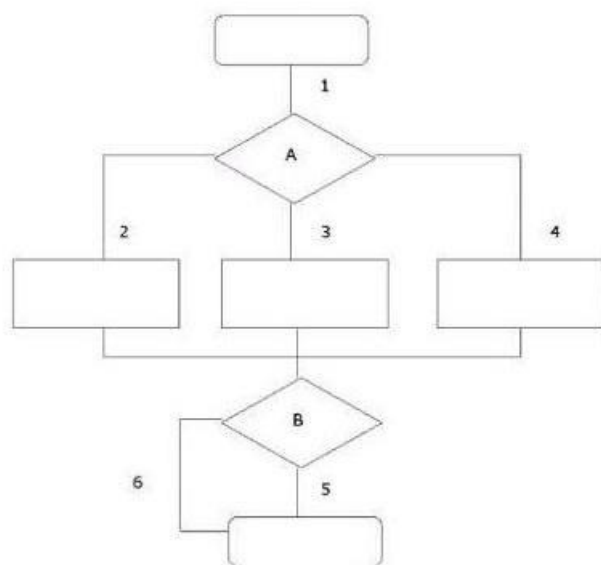
**Section:** (none)

**Explanation**

**Explanation/Reference:**

**QUESTION 17**

See the illustration below:



Which test situations can be differentiated when the coverage type paths test depth level 2 is used?

- A. 1-2; 2-3; 3-4; 2-4; 2-5; 2-6; 3-5; 3-6; 4-5; 4-6; 5-6
- B. 1-2; 1-3; 1-4; 2-5; 3-5; 4-5; 2-6; 3-6; 4-6
- C. 1-2-5; 1-2-6; 1-3-6; 1-3-5; 1-4-6; 1-4-5

**Correct Answer:** B

**Section:** (none)

**Explanation**

**Explanation/Reference:**



**QUESTION 18** Which system development method is agile and contains structured guidelines for development testing?

- A. DSDM
- B. SDM
- C. XP

**Correct Answer:** C

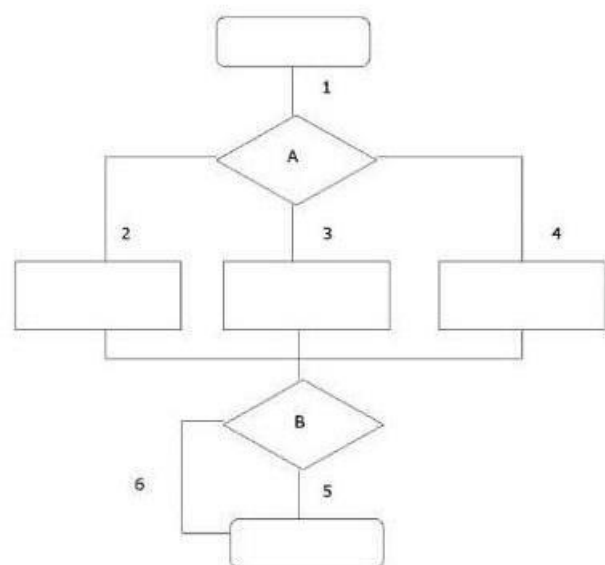
**Section:** (none)

**Explanation**

**Explanation/Reference:**

**QUESTION 19**

See the illustration below:



What is the minimum number of logical test cases generated by the use of the Process Cycle Test if the coverage type paths test depth level 2 is used?

- A. 3
- B. 5
- C. 6
- D. 9

**Correct Answer: C**

**Section: (none)**

**Explanation**

**Explanation/Reference:**



#### QUESTION 20

The test infrastructure consists of facilities and resources required to conduct testing effectively. Which facility does not belong to the testing infrastructure?

- A. test environments
- B. test design techniques
- C. test tools
- D. workplaces

**Correct Answer: B**

**Section: (none)**

**Explanation**

**Explanation/Reference:**

**QUESTION 21** See the specification below:

```
IF A AND (B OR C)
THEN error message
ENDIF
```

How many logical test cases are distinguished if Semantic Testing with coverage type decision points condition/decision coverage is used?

- A. 2
- B. 3



- C. 4
- D. 8

**Correct Answer:** A

**Section:** (none)

**Explanation**

**Explanation/Reference:**

**QUESTION 22** What can be avoided by consolidating separate checklists into one checklist for assessing a test basis?

- A. finding the same test basis defect more often
- B. using a particular checklist in both the acceptance and system tests
- C. that every project compiles its own checklist
- D. duplicating work on identical parts of the test basis during the evaluation

**Correct Answer:** D

**Section:** (none)

**Explanation**

**Explanation/Reference:**

**QUESTION 23** Which test design technique uses operational profiles and load profiles?

- A. Data Cycle Test
- B. Process Cycle Test
- C. Real-Life Test
- D. Use Case Test



**Correct Answer:** C

**Section:** (none)

**Explanation**

**Explanation/Reference:**

**QUESTION 24** What is the aim of the activity 'assessing the test basis'?

- A. to determine the risk of the various system components
- B. to select the most suitable test design techniques
- C. to determine whether the delivered system components can be tested in a useful manner
- D. to establish the testability of the test basis

**Correct Answer:** D

**Section:** (none)

**Explanation**

**Explanation/Reference:**

**QUESTION 25** What is not one of the aims of the 'testability review test basis' report?

- A. providing feedback on the quality of the test basis and its impact on the planned test procedure

- B. gaining an insight into the estimation for the test procedure
- C. obtaining information on project risks
- D. discussing the weak spots in the system design on time

**Correct Answer:** B

**Section:** (none)

**Explanation**

**Explanation/Reference:**

**QUESTION 26**

Three parameters play a role for a printing function and for every parameter there are two equivalence classes to be tested:

font:	arial	verdana
font color:	black	color
font size:	10	12

	font	font color	font size
1	arial	black	10
2	arial	color	12
3	verdana	black	12
4			



Which combination is missing in the table if the coverage type pairwise testing is applied?

- A. arial color 10
- B. arial black 12
- C. verdana color 10
- D. verdana black 10

**Correct Answer:** C

**Section:** (none)

**Explanation**

**Explanation/Reference:**

**QUESTION 27** Which of the following statements about 'evaluation' is correct?

- A. evaluation relates to the left-and and right-hand side of the V model
- B. evaluation is the review of end products
- C. evaluation applies to incremental and iterative system development methods

**Correct Answer:** C

**Section:** (none)

**Explanation**

**Explanation/Reference:**

**QUESTION 28** With which step in the business driven test management (BDTM) approach follows the step determining risk class? With which step in the business driven test management (BDTM) approach follows the step determining risk class?

- A. determining light/thorough testing
- B. formulating the assignment and gathering test goals
- C. creating test cases
- D. allocating test techniques

**Correct Answer:** A

**Section:** (none)

**Explanation**

**Explanation/Reference:**

**QUESTION 29** With which units do you best start the unit integration test?

- A. the units that are ready first
- B. the units that are the worst (least) documented
- C. the units in which the most problems are expected

**Correct Answer:** C

**Section:** (none)

**Explanation**

**Explanation/Reference:**

**QUESTION 30** What is not a test benefit?

- A. facilitating good project control by providing information
- B. avoiding repair costs and consequential loss in the production situation
- C. avoiding damage during production
- D. release of a product

**Correct Answer:** D

**Section:** (none)

**Explanation**

**Explanation/Reference:**

**QUESTION 31** What is not a general step when specifying test cases?

- A. allocating the test techniques
- B. identifying test situations
- C. creating the test script
- D. establishing the starting point

**Correct Answer:** A

**Section:** (none)

**Explanation**

**Explanation/Reference:**

**QUESTION 32** What constitutes a good test environment?

- A. it is possible to adequately determine to what extent the test object meets the requirements



- B. it has been configured and tested by qualified personnel
- C. it meets both of the requirements listed above
- D. it is as similar to the production environment as possible and the test data is consistent

**Correct Answer:** A

**Section:** (none)

**Explanation**

**Explanation/Reference:**

**QUESTION 33**

See the figure below:

Value field	Always wrong				W/V	W/V	Always Valid	
	Too many symbols	Too few symbols	Wrong symbols	Value outside of range	Leave field empty	Value zero	Min. value	Max. value
Bank group	>5	<5	-num	not applicable	EM	EM	00001	55555
Expiry date	>4	<4	-num	-**01-**12	OK	EM	0001	9912
Postcode	>6	<6	-alphanum	-GGGGXXX	EM	EM	1000AA	9999ZZ
Pin ind	>1	<1	-alpha	-(Y,N)	EM	EM	Y	N

Of which test design technique is this an example?

- A. Data Combination Test
- B. Data Cycle Test
- C. Semantic Test
- D. Syntactic Test



**Correct Answer:** D

**Section:** (none)

**Explanation**

**Explanation/Reference:**

**QUESTION 34** A fun park is celebrating its 25th birthday and has come up with the following discount campaign:

Everybody is given 50% discount on their admission ticket. Children younger than 4 years, adults older than 64 years, and for this special occasion adults aged 25 years will be allowed in free.

How many equivalence classes are included in this situation?

- A. 3
- B. 4
- C. 5

**Correct Answer:** C

**Section:** (none)

**Explanation**

**Explanation/Reference:**

**QUESTION 35** What is recorded in a test plan?

- A. the initial situation, action and predicted result
- B. the test situations to be tested
- C. the division into test units and the test techniques to be used
- D. a stepped plan for the test execution

**Correct Answer:** C

**Section:** (none)

**Explanation**

**Explanation/Reference:**

**QUESTION 36**

See the specification below:

```
IF      Dutch telephone number AND telephone number does not contain 10 digits
THEN   error message
ENDIF
```

How many logical test cases can be generated if a semantic test using the coverage type decision points modified condition/decision coverage is used?

- A. 1
- B. 2
- C. 3
- D. 4

**Correct Answer:** C

**Section:** (none)

**Explanation**

**Explanation/Reference:**



**QUESTION 37** Which activity takes place in the Preparation phase?

- A. the test object intake
- B. allocating test units and test techniques
- C. determining the test basis
- D. collection of the test basis

**Correct Answer:** D

**Section:** (none)

**Explanation**

**Explanation/Reference:**

**QUESTION 38**

What strongly benefits the quality characteristic 'testability'?

- A. the ease of operation of the system by the end-users
- B. the ease with which an interface can be created with another information system
- C. the ease with which the information system can be placed and maintained in an operational condition
- D. having a regression test and other testware

**Correct Answer:** D  
**Section:** (none)  
**Explanation**

**Explanation/Reference:**

**QUESTION 39** What is to be preserved in the activity reserving the testware?

- A. all testware created during the project
- B. a selection of the testware in consultation with the future administrator

**Correct Answer:** B  
**Section:** (none)  
**Explanation**

**Explanation/Reference:**

**QUESTION 40**

What is an advantage of the BDTM approach?

- A. a test process that can be controlled by the client
- B. a cheaper test process
- C. a risk-free production launch of the tested system

**Correct Answer:** A  
**Section:** (none)  
**Explanation**



**Explanation/Reference:**

**QUESTION 41** What is not an element of a test case in relation to the system behavior to be tested?

- A. action
- B. defect
- C. initial situation
- D. predicted result

**Correct Answer:** B  
**Section:** (none)  
**Explanation**

**Explanation/Reference:**

**QUESTION 42** Drivers can be used in the Execution phase of a test process. What are drivers for?

- A. to test, at an early stage, a module that has relationships with modules not yet realized
- B. to gain insight into aspects like memory use, CPU use, network load and performance
- C. to determine whether the system continues to function correctly and at the required speeds under the expected production load

**Correct Answer:** A  
**Section:** (none)  
**Explanation**

**Explanation/Reference:**

**QUESTION 43** Problems can be prevented by looking closely at the way the starting point for the test execution must be structured and which process must be deployed when using it. Which problem does this not prevent?

- A. production disruptions
- B. a deteriorating starting point
- C. testing gets increasingly expensive

**Correct Answer:** A  
**Section:** (none)  
**Explanation**

**Explanation/Reference:**

**QUESTION 44**

See the following specification:

IF	it is cold
	THEN put on your jacket
ENDIF	
IF	it rains and is not windy
	THEN you use an umbrella
ELSE	
	you do not use an umbrella
ENDIF	

How many test situations are produced when the coverage type decision points condition/decision coverage is used?

- A. 2
- B. 3
- C. 4
- D. 8

**Correct Answer:** C  
**Section:** (none)  
**Explanation**

**Explanation/Reference:**

**QUESTION 45**

See the specification below:

IF	purchase = book
	IF purchase amount >= 100 Euro
	THEN discount percentage := 10%
	ENDIF
ELSE	error message
ENDIF	

Apply the Decision Table Test to the above specification. When doing this, use the coverage type multiple condition coverage. How many logical test cases result in an error message?

- A. 1
- B. 2
- C. 3

D. 4

**Correct Answer:** B

**Section:** (none)

**Explanation**

**Explanation/Reference:**

**QUESTION 46** What is the definition of valuation? What is the definition of valuation?

- A. Evaluation gives insight in the actual and future status of the end product.
- B. Evaluation is a process that gives insight into and advice on quality and related risks.
- C. Evaluation is assessing the interim products in the system development process.

**Correct Answer:** C

**Section:** (none)

**Explanation**

**Explanation/Reference:**

**QUESTION 47** Which defects can be detected more effectively with development tests than with system and/or acceptance tests?

- A. defects related to effectivity
- B. defects related to the database and/or the operating system
- C. defects related to the functional specifications
- D. defects related to performance



**Correct Answer:** B

**Section:** (none)

**Explanation**

**Explanation/Reference:**

**QUESTION 48** What is the aim of a unit test?

- A. to demonstrate that a unit meets the functional specifications
- B. to demonstrate that a unit meets the technical specifications
- C. to demonstrate that a unit integrates properly with other units

**Correct Answer:** B

**Section:** (none)

**Explanation**

**Explanation/Reference:**

**QUESTION 49** Is the checklist created to determine the test basis dependent on the selected test design technique?

- A. yes
- B. no

**Correct Answer:** A



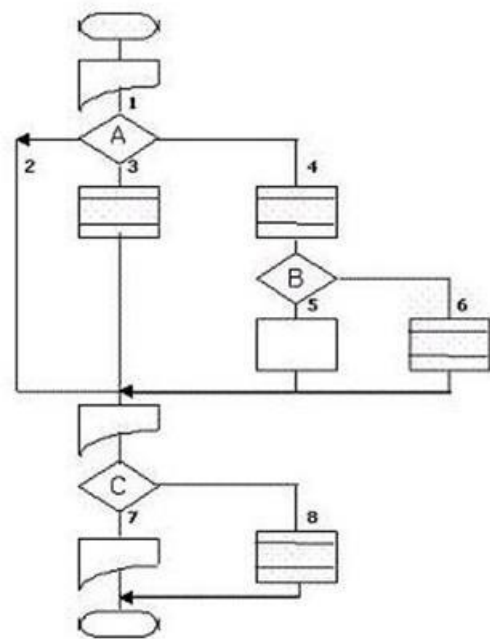
Section: (none)

Explanation

Explanation/Reference:

**QUESTION 50**

See the procedure flow below:



How many test situations are produced when the coverage type paths with test depth level 2 is used?



- A. 3
- B. 8
- C. 12
- D. 13

Correct Answer: D

Section: (none)

Explanation

Explanation/Reference:

**QUESTION 51**

Which TMap phase may be located on the critical path?

- A. Planning and Control
- B. Specification
- C. Execution
- D. Preparation

Correct Answer: C

Section: (none)

Explanation

Explanation/Reference:

**QUESTION 52** What is the correct description of the term test level?

- A. the information that defines the required system behavior
- B. a group of test activities with the attention of checking the information system in respect of a number of correlated (part aspects of) quality characteristics
- C. a group of test activities that are managed and executed collectively

**Correct Answer:** C

**Section:** (none)

**Explanation**

**Explanation/Reference:**

**QUESTION 53** During which TMap phase is testing 'dynamic implicit'?

- A. Specification
- B. Execution
- C. Preparation

**Correct Answer:** B

**Section:** (none)

**Explanation**

**Explanation/Reference:**

**QUESTION 54** The possible results of every condition are tested at least once. To which coverage type does this refer?

- A. condition coverage
- B. condition/decision coverage
- C. decision coverage
- D. modified condition/decision coverage



**Correct Answer:** A

**Section:** (none)

**Explanation**

**Explanation/Reference:**

**QUESTION 55**

Which test design technique can be used to test performance?

- A. Data Cycle Test
- B. Process Cycle Test
- C. Real-Life Test

**Correct Answer:** C

**Section:** (none)

**Explanation**

**Explanation/Reference:**

**QUESTION 56**

See the following specification:

IF	customer no. > 200 AND (group=330 OR article=action OR customer years >=10)
	THEN discount = 10%
	IF customer no. > 500 AND region code = 4
	THEN invoice type = A
	ELSE
	invoice type = C
	ENDIF
ELSE	invoice type = C
ENDIF	

How many test situations can be distinguished for this specification when the coverage type decision points modified condition/decision is used?

- A. 2
- B. 6
- C. 8
- D. 64

**Correct Answer:** C

**Section:** (none)

**Explanation**

**Explanation/Reference:**

#### QUESTION 57

During the test execution of a large customer registration system, the system went down for several times. Although there were no test cases described the tester concluded that the continuity was poor. Which testing method is described here?

- A. dynamic explicit testing
- B. dynamic implicit testing
- C. static testing

**Correct Answer:** B

**Section:** (none)

**Explanation**

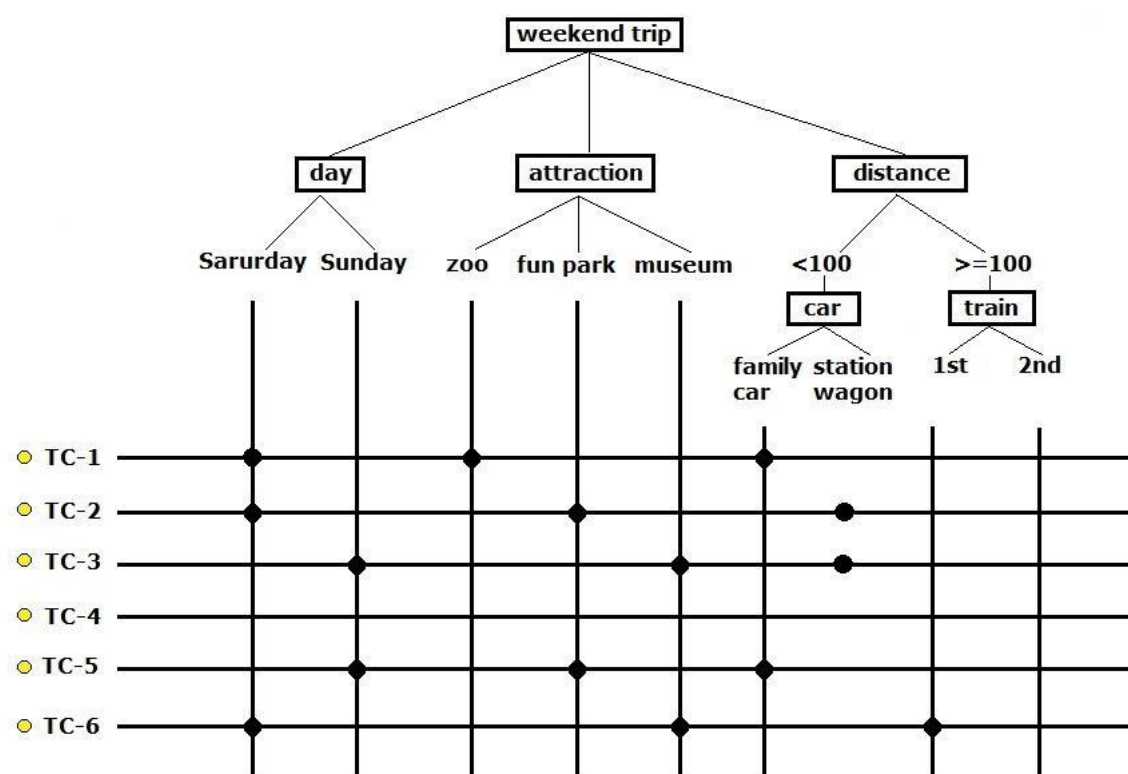
**Explanation/Reference:**

#### QUESTION 58

See the illustration below:

In order to test a registration application for a weekend trip, logical test cases must be created according to the Data Combination Test. It is agreed to conduct light testing. One data pair is defined that must be fully tested in combination: • day attraction

Using a classification tree, six test cases are designed.



Where should the 'bullets' for test case 4 be placed?

- A. Saturday, zoo, 2nd
- B. Sunday, zoo, family car
- C. Sunday, zoo, 2nd



**Correct Answer:** C  
**Section:** (none)  
**Explanation**

**Explanation/Reference:**

**QUESTION 59**

When customer data is entered, it is mandatory to specify an e-mail address. Which test design technique can be used to test the above?

- A. Data Cycle Test
- B. Process Cycle Test
- C. Syntactic Test

**Correct Answer:** C  
**Section:** (none)  
**Explanation**

**Explanation/Reference:**

**QUESTION 60**

There are two parties in the V model:

- the supplying party ▪
- the accepting party

Which system development phase or test phase is not performed by the supplying party?

- A. Functional design
- B. Realization
- C. System test
- D. Technical design

**Correct Answer:** D

**Section:** (none)

**Explanation**

**Explanation/Reference:**

